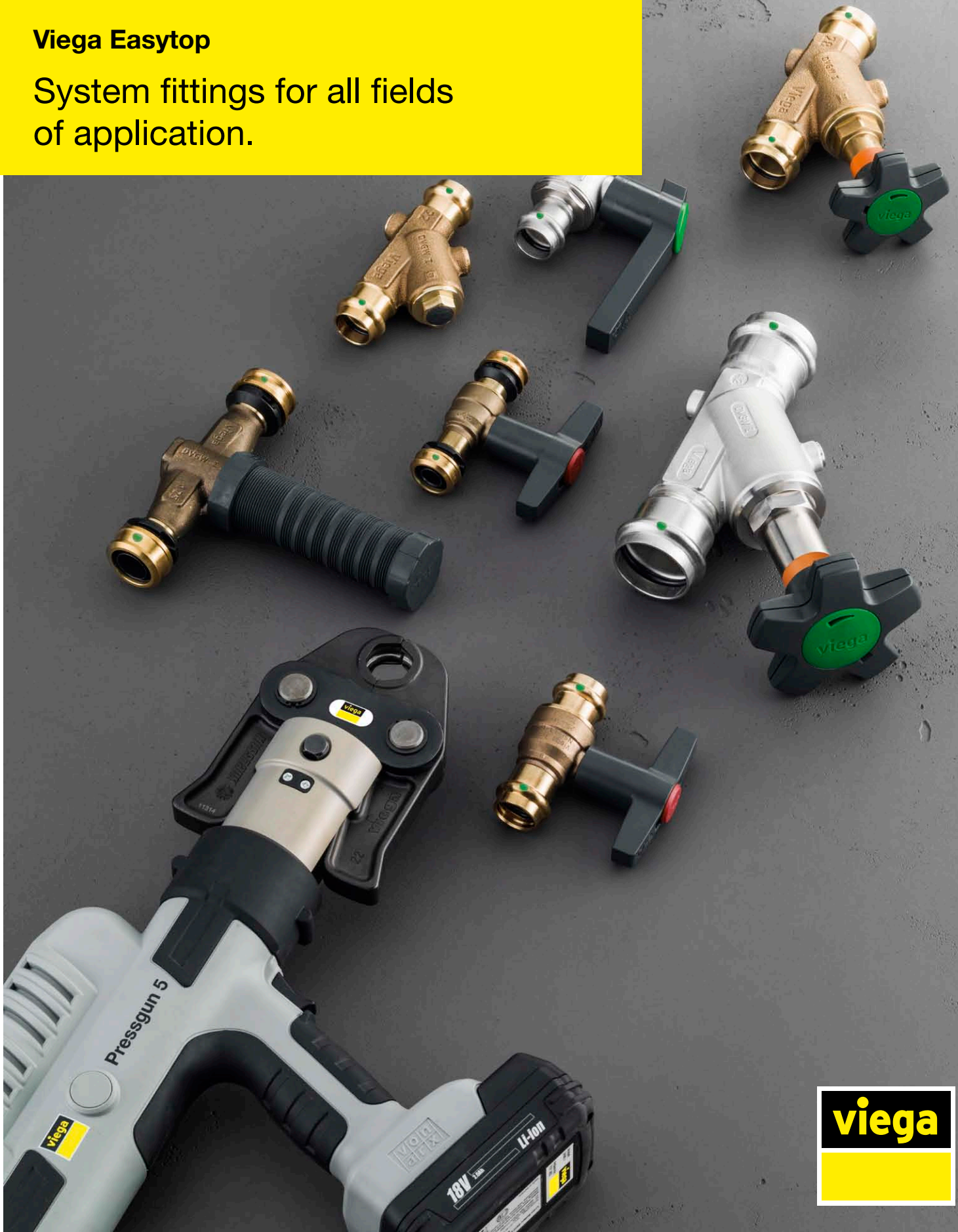
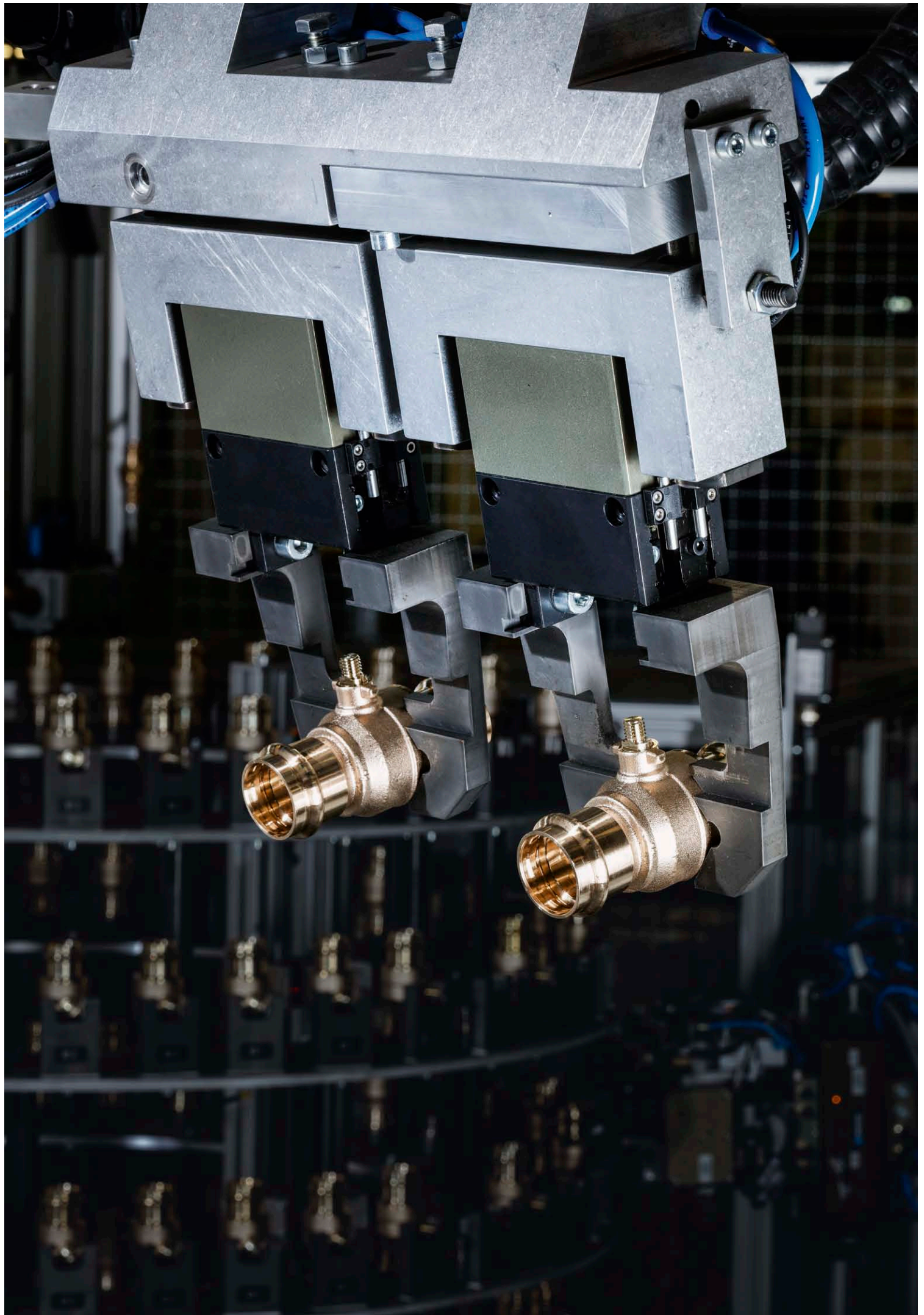


Viega Easytop

System fittings for all fields of application.



viega



Viega.

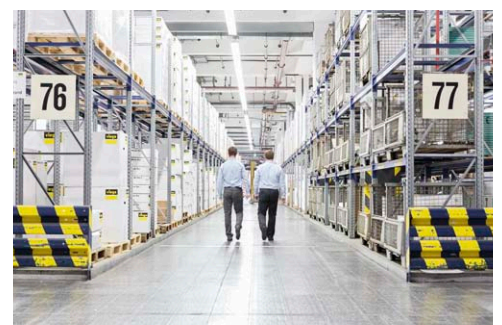
CONNECTED IN QUALITY.

Viega is convinced: Quality is everything. Without quality, everything means nothing. That is why the company strives to exceed itself each and every day. By means of regular dialogue with its customers, by developing better products and service features and by an approach to the future that does not lose sight of its past.

Viega has been connected in quality for over 115 years. It all began with the vision of revolutionising installation technology. With over 4,000 employees and ten locations, we have progressed to become a global market leader in the installation technology sector while still remaining true to our principles and setting our own high standards.

It is of importance to Viega to support its customers in their daily work. To this end, it shares its knowledge with customers all over the world, matches materials, technology and comfort, takes time for quality management and invests in research and development. The result: a perfectly coordinated system providing customers fast and reliable access to over 17,000 products.

Quality is everything. Without quality, everything means nothing.



CONTENTS

6

The optimised Viega Easytop system: Easytop system fittings.

8

The optimised Viega Easytop system:
Easytop system fittings – developed to fulfil all requirements.

10

Viega Easytop system fittings: Suitable for all fields of application.

12

Viega Easytop slanted seat valves:
All features optimised, from the smallest detail to the XL dimensions.



14

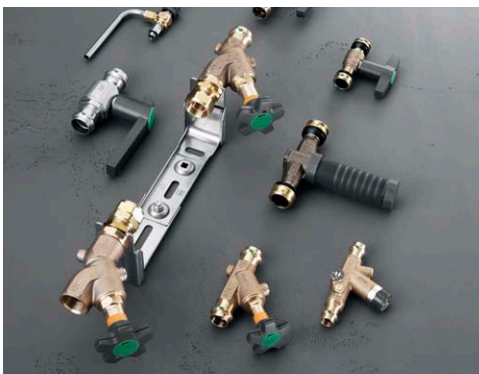
Viega Easytop mounting units:
For all kinds of supply requirements.

16

Viega Easytop system ball valves: Individually and economical – a perfect solution.

18

Viega Easytop concealed free-flow valve:
Premium technology for upper storeys, perfectly dimensioned and fully flexible.

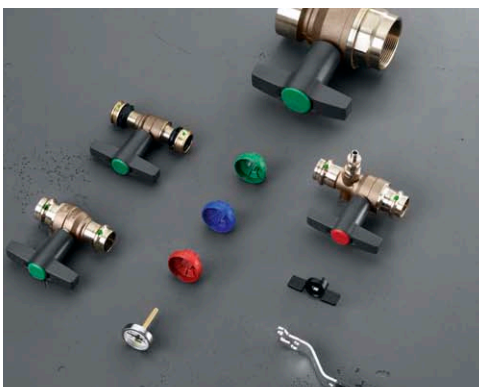


20

Viega Easytop domestic water meter unit:
The unit with endless benefits.

22

Viega Easytop system circulation regulation valve:
One valve with two functions.



24

Viega Easytop accessories: Perfectly equipped to master all tasks.

26

Viega Easytop: The product range.



The optimised Viega Easytop system

EASYTOP SYSTEM FITTINGS.

With a matching shut-off valve for every application area.

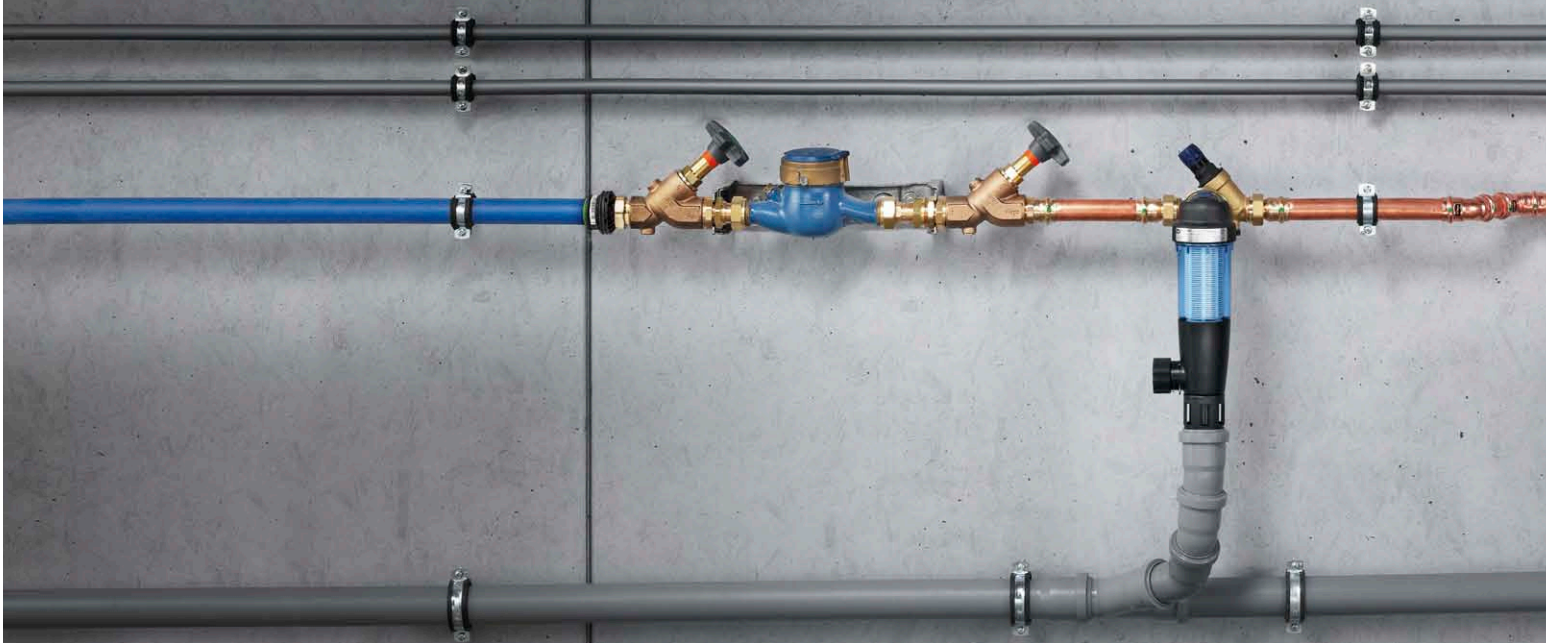
The Easytop system fittings match Viega's metal and plastic press connector systems. In addition to slanted seat valves, CRV valves and backflow preventers, the wide range of Easytop components also comprises ball valves. Premium materials, time-proven SC-Contur and optimised sealing concepts ensure maximum performance in terms of safety and functionality. Furthermore, the system fittings have a direct press connection: D15-54 for metal press connector systems, and D16-63 for plastic press connector systems.

Fulfil the highest requirements ...

Planning a drinking water system is a pretty challenging task, not only in respect of the material but also of the challenges posed to the trade professionals. The Drinking Water Ordinance (DWO) defines the minimum requirements for water intended for human consumption and specifies mandatory limit values at extraction points applicable for hot as well as cold water. All parts and components must be in accordance with the generally accepted codes of practice. The label of a recognized inspection authority – e.g. DIN-DVGW, DVGW or GS label – confirms that this precondition is met.

.... without any stress.

The integrally moulded system press connections allow you to combine the Easytop system fittings with all Viega press connector systems: Sanpress, Sanpress Inox or Profipress. There is no need for sealed transitions, which ensures maximum safety for the entire drinking water installation. The materials used correspond to the materials recommended in the White List for Metal Materials by the German Federal Environmental Agency and comply with the regulations DVGW Worksheet W270 including KTW Recommendation, DIN EN 1213:1999 (fittings group I) and DIN 50930-6/ DIN EN 1982.

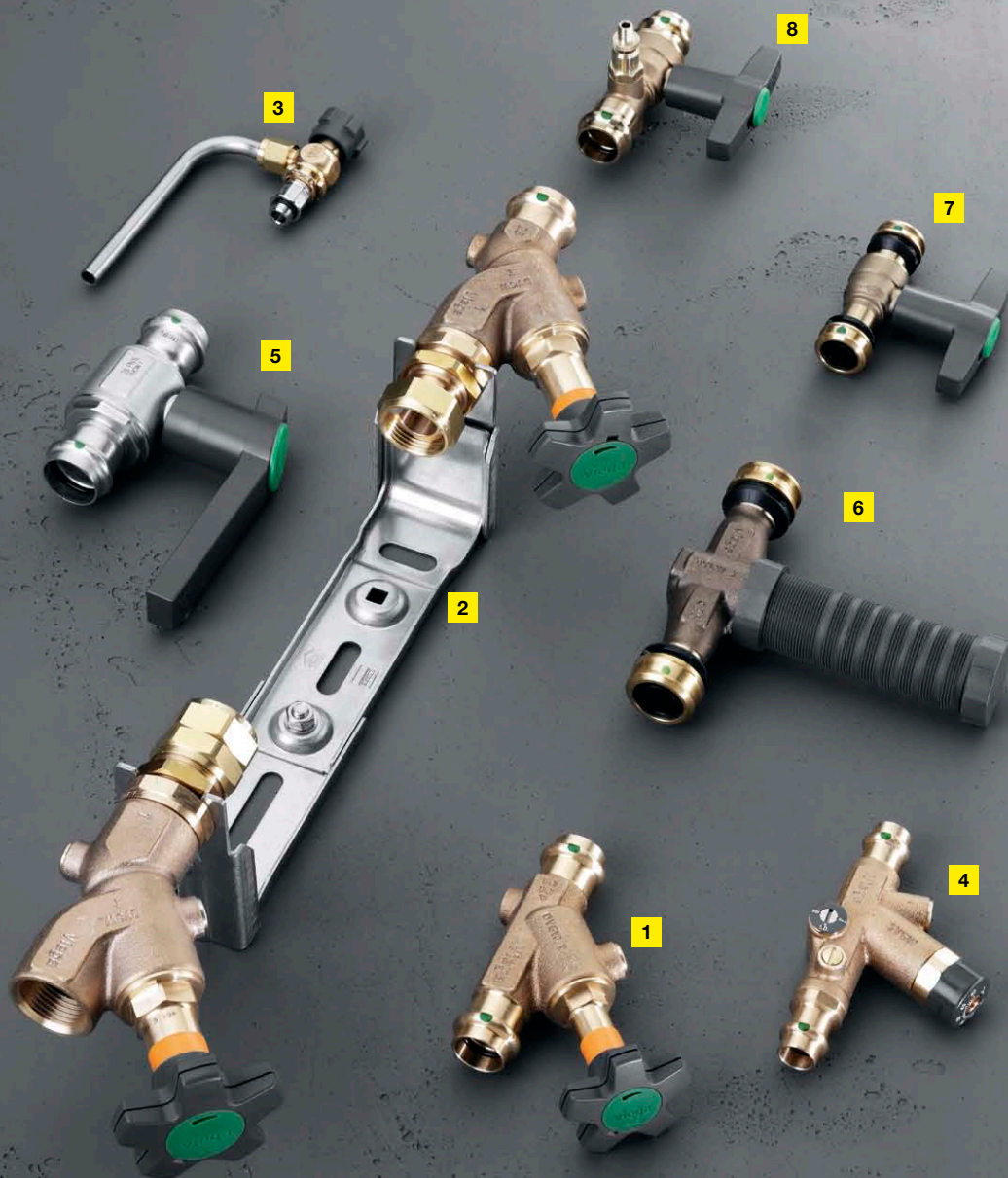




The optimised Viega Easytop system

EASYTOP SYSTEM FITTINGS – DEVELOPED TO FULFIL ALL REQUIREMENTS.

Pipeline fittings certainly are a basic standard in everyday work. But this does not mean that this standard cannot be raised to new levels. The latest generation of the Easytop system fittings, for example, convinces with technical optimisation and practical adjustments to the design.



1 Easytop slanted seat valve

2 Easytop mounting unit

3 Easytop extraction valve

4 Easytop circulation regulation valve S/E

5 Easytop Inox ball valve

6 Easytop concealed free-flow valve

7 Easytop ball valve with Raxofix press connections

8 Easytop ball valve with Sanpress press connections



Tried-and-tested Viega SC-Contur

Technical details

Made of corrosion-resistant stainless steel, the full functionality of all Easytop system fittings is ensured at all times. The completely novel, innovative sealing concept of the system valves furthermore protects the valve plate seal from damage caused by excessive pressing forces. The optimised sealing concept of the system ball valves ensures smooth operation over their full service life.

Hands-on benefits

The ergonomically designed handwheels are easier to grip; thanks to the non-rising valve stem, they are easy to install also in confined installation situations. The signal colour of the position indication clearly shows whether the valve is open or closed, even seen from a distance. The new ergonomic plastic T-shaped actuating lever can be replaced by a metal T-shaped or metal L-shaped lever to match the conditions of the respective application. This ensures premium flexibility also in confined installation situations.

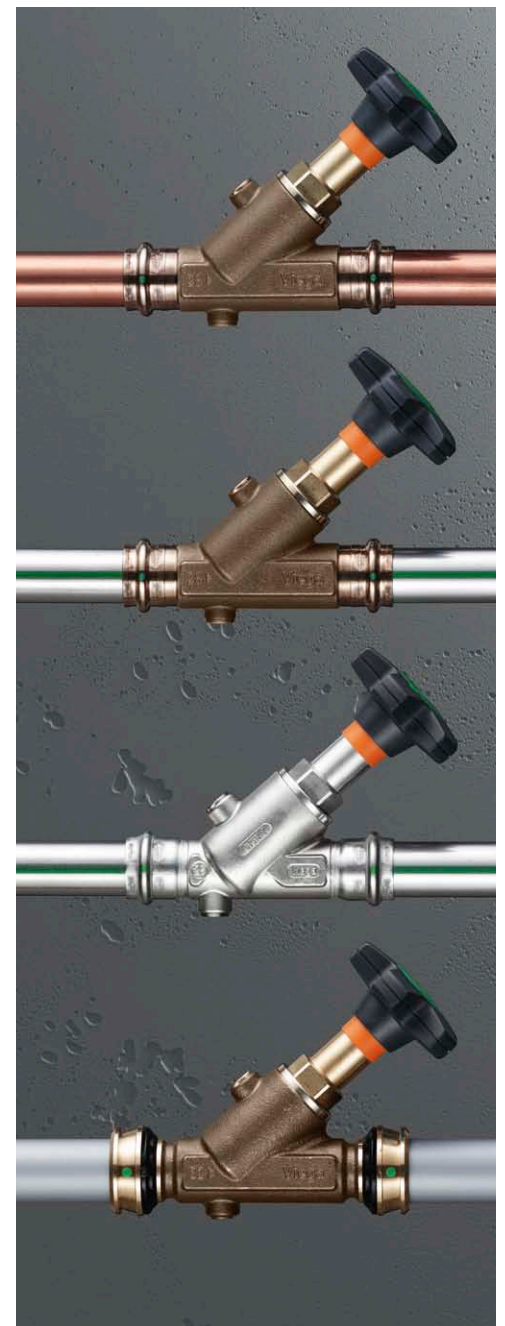
Time-tested variants are still in the portfolio

Whether gunmetal or stainless steel:
The extensive range of articles in

different variants meets all requirements and caters for all installation preferences – for the fans of instant pressing just as for those who prefer conventional screwed connections. The Easytop system fittings offer a wide choice of accessories such as insulating shells, drainage valves and extensions as well as pressure loss optimisation. It goes without saying that they meet all national and international standards and regulations.

Central leakage test

Viega guarantees the reliability of the dry central leakage test provided all fittings and connectors in the installation are equipped with Viega SC-Contur. The tested SC-Contur guarantees that inadvertently unpressed connections come to light. In other words: In the dry leakage test, the pressure will drop from 22 hPa to 0.30 MPa over the entire pressure range. If the leakage test is carried out with water in a pressure range from 0.10 to 0.65 bar, the water will leak out at any inadvertently unpressed connections. Unpressed connections can be re-pressed instantly.



The wide range of system press connectors of the Easytop system fittings range is easy to combine with the Viega press connector systems.



TESTED AND CERTIFIED SAFETY

Easytop system fittings can be used for all types of drinking water in acc. with DWO and DIN 50930-6 and are DVGW certified. Their plastic components comply with the KTW recommendation, the UBA Elastomer Guideline, and the requirements of the DVGW Worksheet W 270. The Easytop system valves furthermore meet the requirements of DIN EN 1213:1999 and DIN 3502, and the Easytop system ball valves those of DIN EN 13828.

Viega Easytop system fittings

SUITABLE FOR ALL FIELDS OF APPLICATION.

Wide product portfolio

With its large selection of articles, Viega Easytop system fittings not only offer components for residential buildings but also for installations in industrial and plant engineering and shipbuilding.

Total commitment

Easytop convinces not only in respect of the fields of use but also of the type of applications: drinking water installations, heating, compressed air or technical gases: With Easytop system fittings, the user benefits from top quality and an extremely long service life, combined with excellent economic efficiency – no matter which medium flows through them.



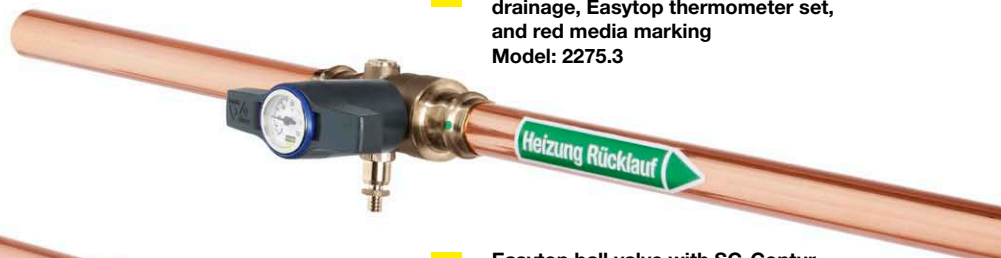
1 Easytop-Sanpress Inox ball valve with SC-Contur
Model: 2370



2 Easytop ball valve with SC-Contur and metal handle
Model: 2275



3 Easytop ball valve with SC-Contur, drainage, Easytop thermometer set, and red media marking
Model: 2275.3



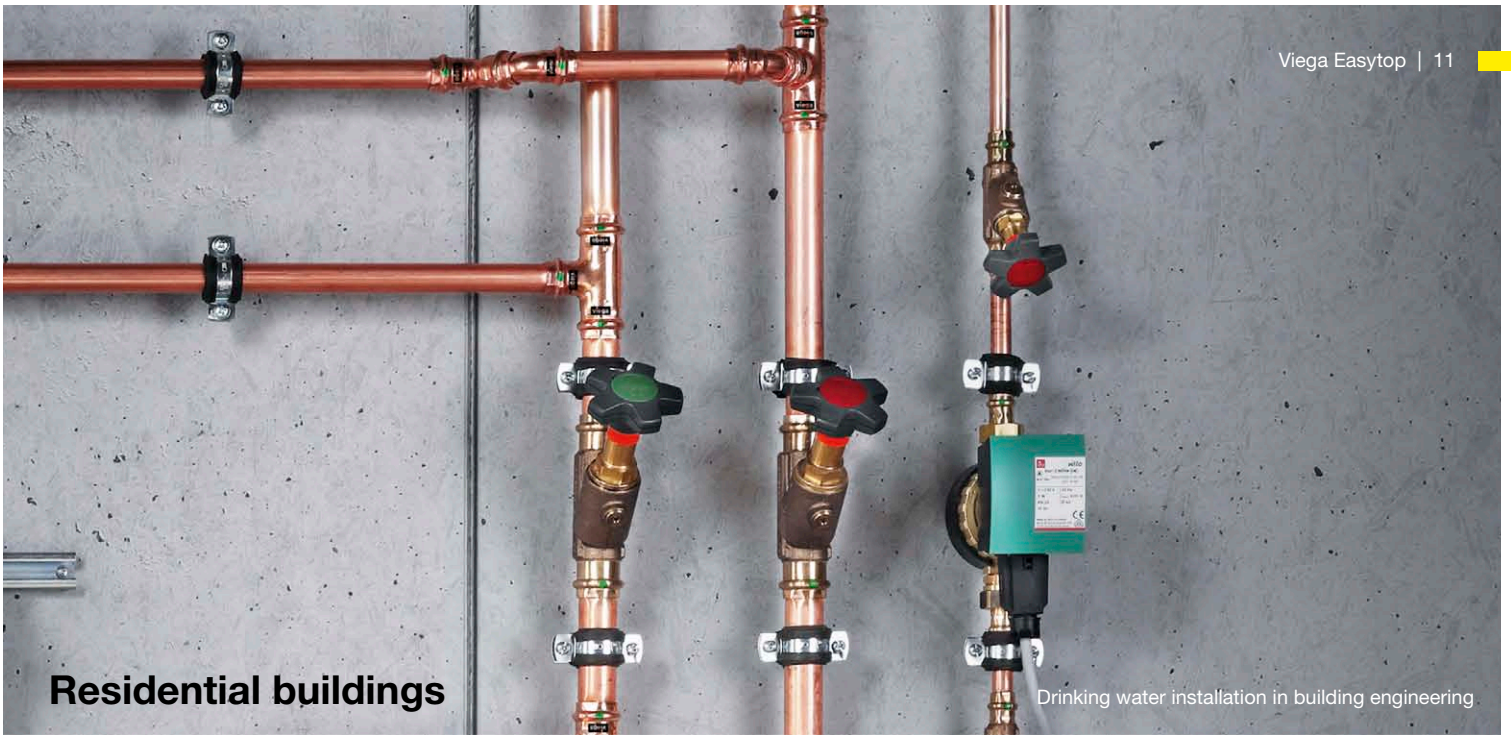
4 Easytop ball valve with SC-Contur, drainage, Easytop thermometer set, and blue media marking
Model: 2275.3



5 Easytop ball valve with SC-Contur and blue protective cap for media marking
Model 2275.3

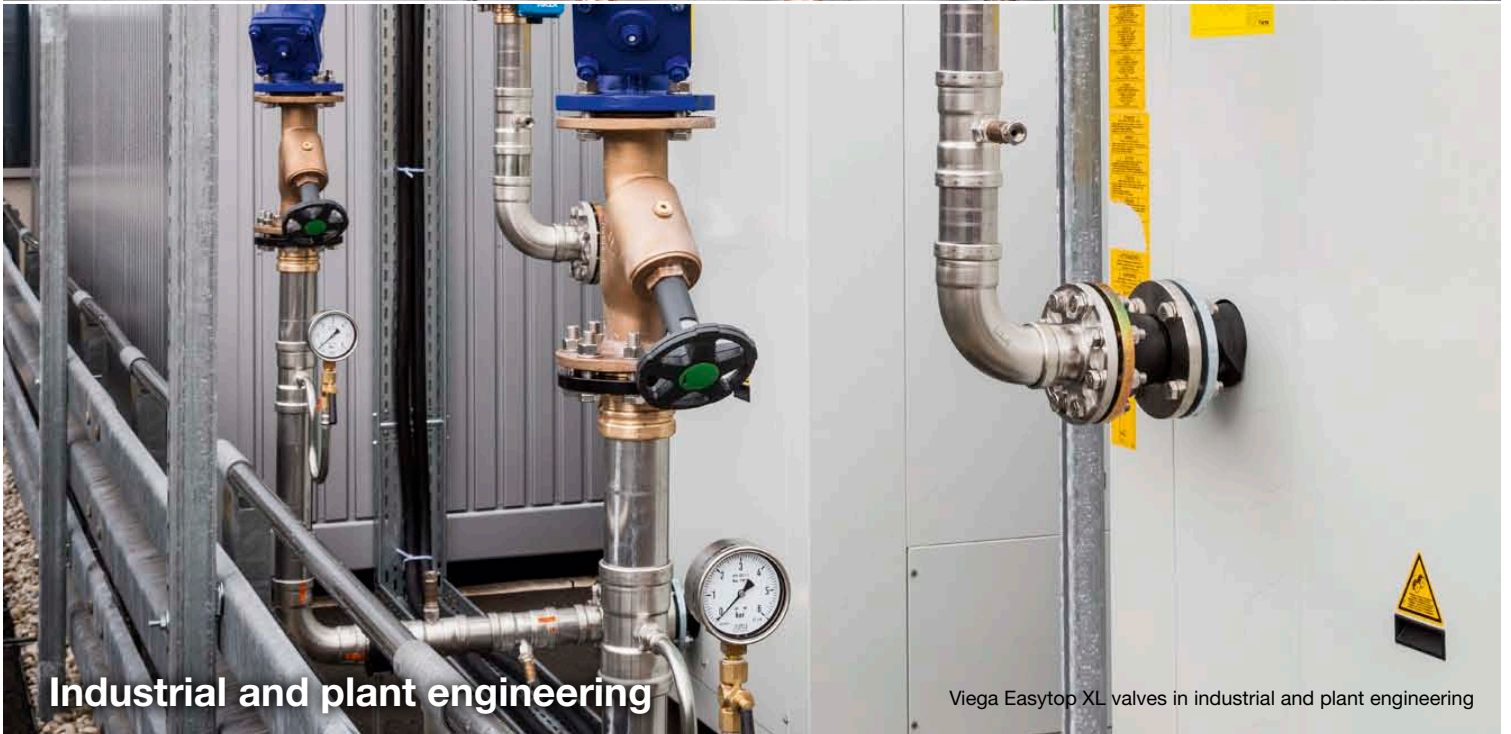


6 Easytop ball valve with SC-Contur and red protective cap for media marking
Model 2275.3



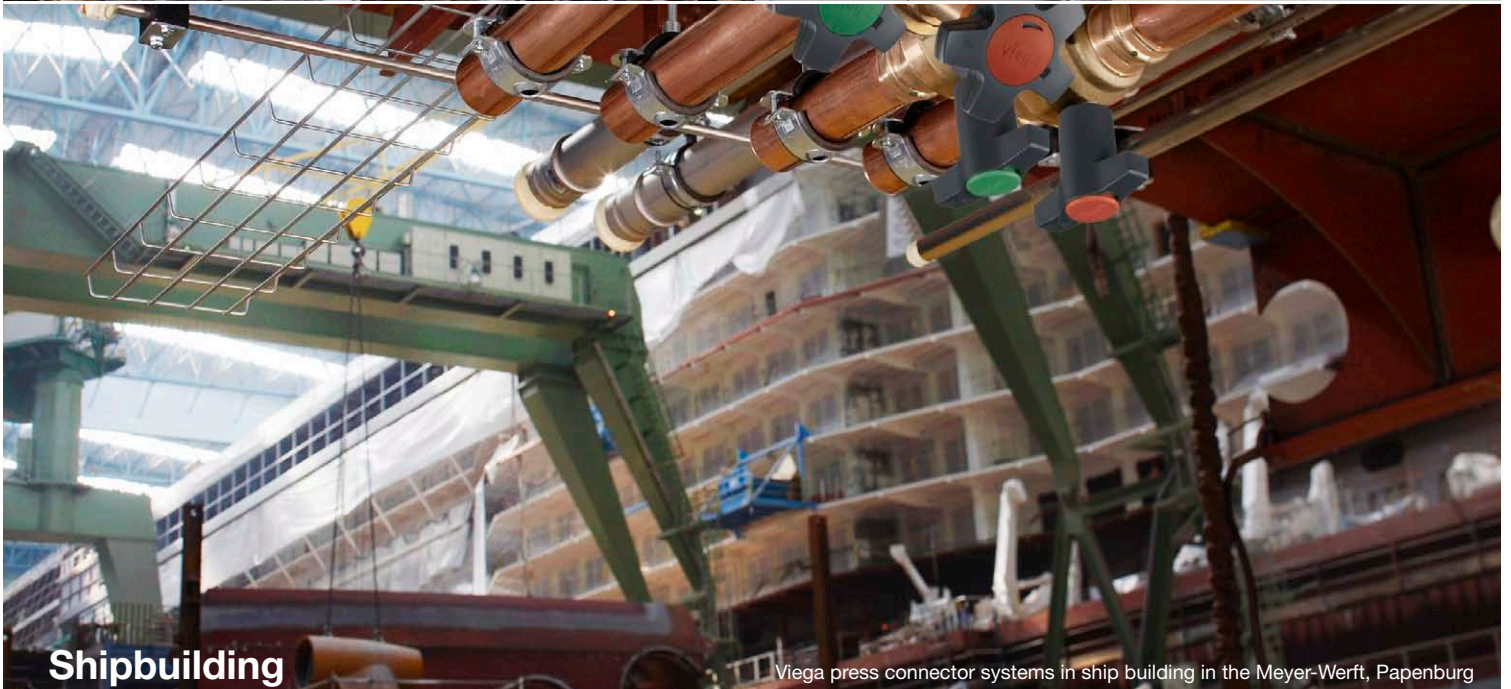
Residential buildings

Drinking water installation in building engineering.



Industrial and plant engineering

Viega Easytop XL valves in industrial and plant engineering



Shipbuilding

Viega press connector systems in ship building in the Meyer-Werft, Papenburg

Viega Easytop slanted seat valves

ALL FEATURES OPTIMISED,
FROM THE SMALLEST DETAIL
TO THE XL DIMENSIONS.





Easytop slanted seat valve with sealing concept pursuant to the principle of secondary force connection



Easytop CRV slanted seat valve



Easytop backflow preventer

Flexible and easy to connect

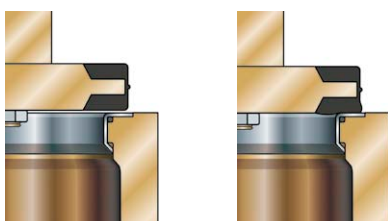
You make the plan – Easytop adapts to it: Viega Easytop system valves are available from DN 15 to DN 100. Equipped with a fixed flange connection pursuant to DIN EN 1092-1, the Easytop XL valves perfectly connect to the Sanpress Inox system or the Sanpress and Profipress systems. Matching flange adapters are available in gunmetal or stainless steel. Easytop valve tops of all dimensions and connections types have a non-rising spindle, are free of dead spaces, and back-sealing.

Internal values – technical aspects

The Easytop slanted seat valve is available in different designs: as slanted seat valve, as slanted seat valve combined with backflow preventer, or as backflow preventer only. For the material, choose between gunmetal and stainless steel. All variants come with corrosion-resistant valve plate units made of high-quality stainless steel, and with a novel innovative sealing concept. To avoid strain on the valve plate seal due to excessively high pressing or torsional forces, the seal integrated in the valve plate is pressed straight onto the valve seat. Here, the valve plate rim acts as a metal stop and prevents excessive force acting on the valve plate seal.

Absolutely convincing – ergonomics, design, accessories

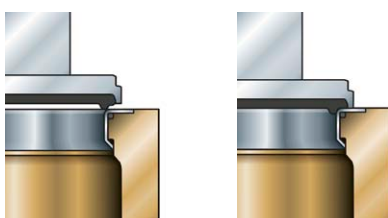
Thanks to the novel rounded handwheel, the new valve tops of the Easytop slanted seat valves are more ergonomic and thus more comfortable to operate. The drain plug is readily accessible, and the signal colour of the new position indication clearly shows whether the valve is open or closed, even seen from a distance. The EnEV compliant insulating shells made of premium EPP insulating material are self-adhesive and thus particularly easy to mount; they have convenient predetermined breaking points for installation of a drainage valve.



Principle of primary force connection

Principle of primary force connection

- The seal is “pressed” onto the valve seat
- Increased wear
- The force acts directly on the seal



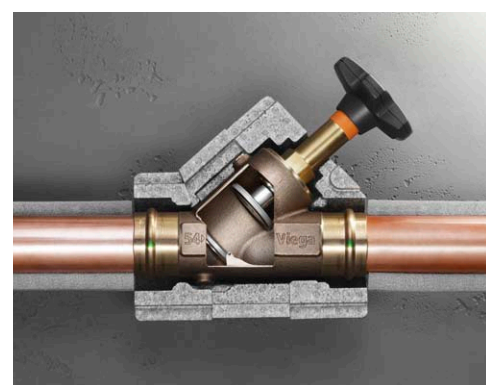
Principle of secondary force connection

Principle of secondary force connection

- The seal lies in a recess in the valve plate
- The valve plate rim acts as a mechanical stop at the valve seat
- The seal “only” ensures leak tightness



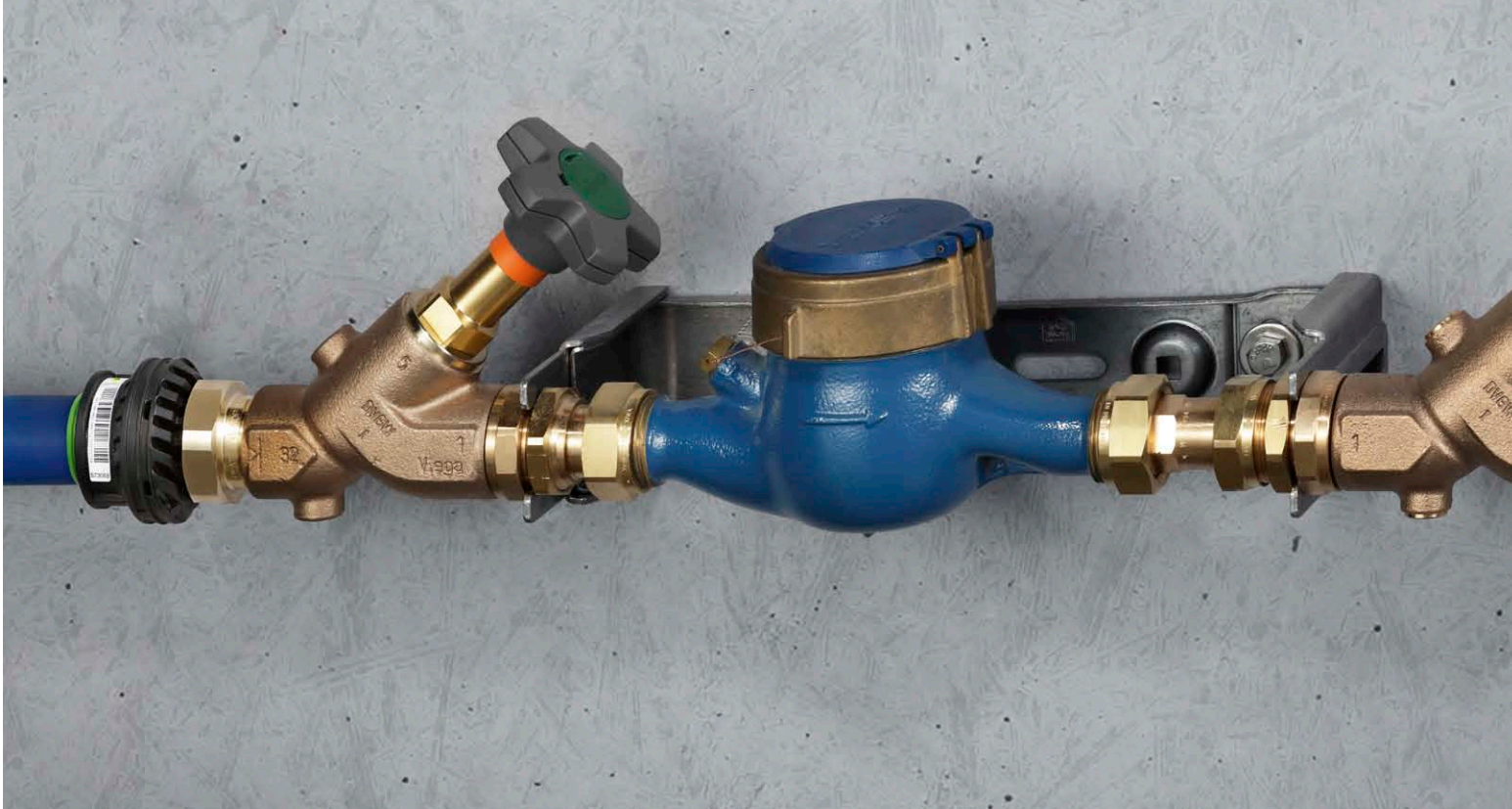
Easytop valve top with ergonomic handwheel, integrated media marking, and position indication in signal colour



Matching EnEV compliant insulating shell

Viega Easytop mounting units

FOR ALL KINDS OF SUPPLY REQUIREMENTS.



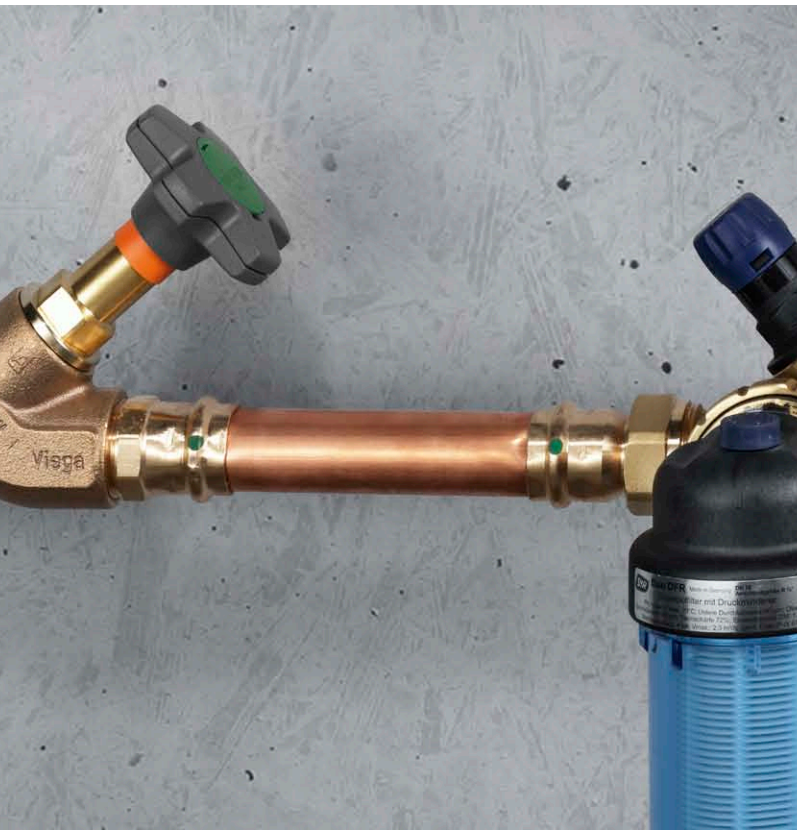
A modular system you can build on

With the flexible Easytop mounting unit, the specific requirements of all supplier units can be easily implemented without the need for additional components. The “Ordinance on the General Terms and Conditions for the Supply with Water” requires the water utility companies to use calibrated water meters to evidence the customers’ water consumption. The calculated consumption is the basis for the amount invoiced to the customer.

Water meters can be mounted horizontally or vertically, depending on their design. The information on the installation situation is shown on the water meters with the upper-case letters H (horizontal) or V (vertical). By means of a setting screw, the water meter bow can be set quickly and easily to the meter volume Qn 2.5 (Q3=4.0 m³/h), Qn 6.0 (Q3=10 m³/h) and Qn 10 (Q3=16 m³/h).

Easy installation

Just a few simple mounting steps are required to adjust the Easytop water meter bows and mounting units to the situation on site. For mounting to uneven walls, the wall bracket is depth-adjustable. Thanks to their flexible equipment and mounting options, Easytop mounting units always provide for a professional, comfortable transition from house service connection to the Viega building installation system.



Easytop mounting units for vertical and horizontal mounting



Easytop slanted seat valve with SC-Contur
Model: 2230.52



Easytop CRV slanted seat valve, with Rp-thread on both sides
Model: 2230.92



Easytop slanted seat valve, with Rp-thread on both sides
Model: 2230.53



Easytop mounting unit
Model: 2230.10

Safe in the long term

Pursuant to DIN 1988, UBA White List, DIN EN 13502 and VDI/DVGW Guideline 6023, the quality of the drinking water must be taken into consideration already during the planning phase. Viega Easytop valves can be used for all types of drinking water. The materials used are

food-safe, hygienic, and permanently comply with the law (they are in compliance with the Drinking Water Ordinance and DIN 50930-6 as well as the KTW recommendation and the requirements of the DVGW Worksheet W270 and are DVGW certified).

Viega Easytop system ball valves

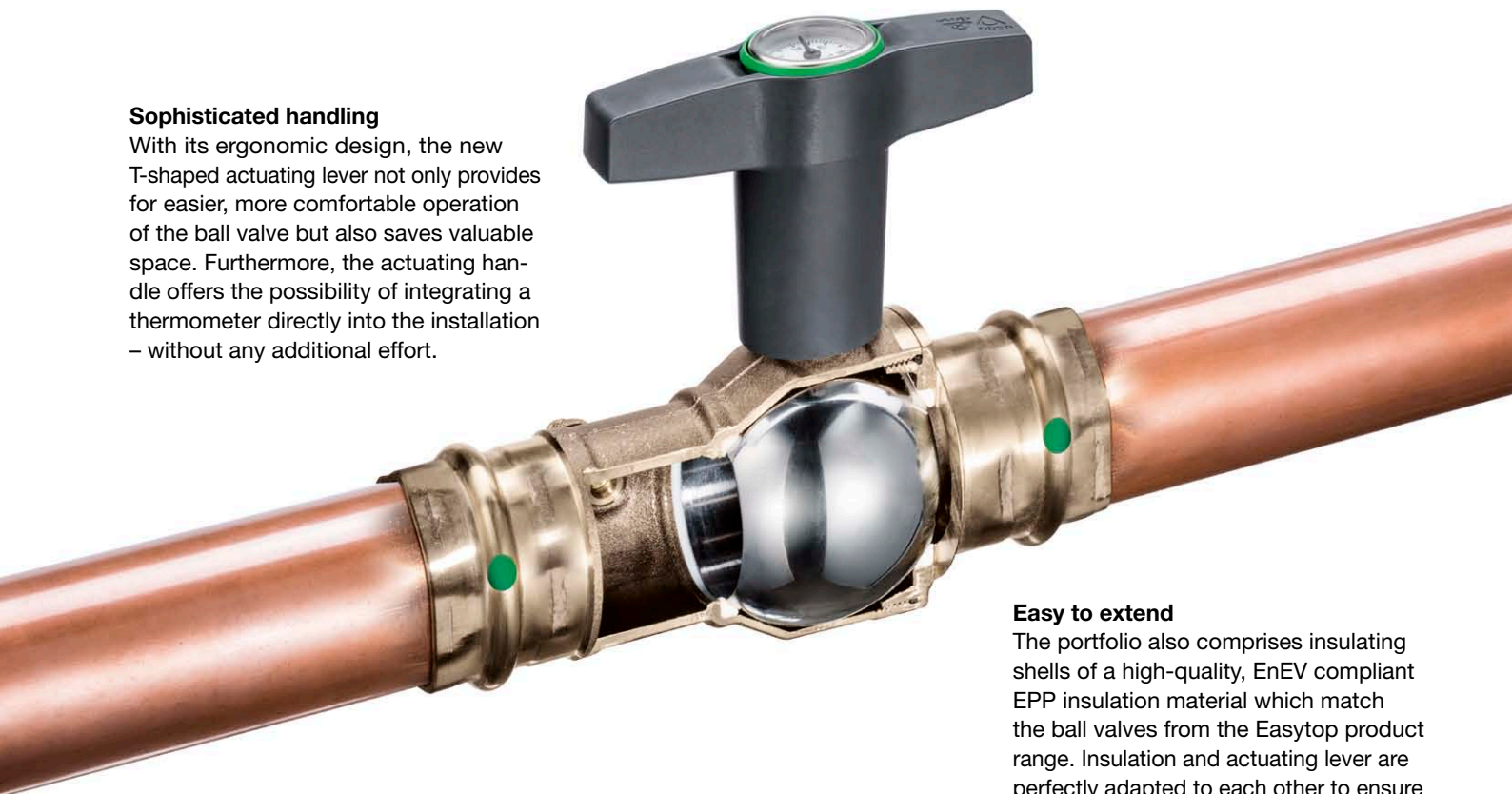
INDIVIDUALLY AND ECONOMICAL –
A PERFECT SOLUTION.



With matching accessories for every application area

Sophisticated handling

With its ergonomic design, the new T-shaped actuating lever not only provides for easier, more comfortable operation of the ball valve but also saves valuable space. Furthermore, the actuating handle offers the possibility of integrating a thermometer directly into the installation – without any additional effort.



Easy to extend

The portfolio also comprises insulating shells of a high-quality, EnEV compliant EPP insulation material which match the ball valves from the Easytop product range. Insulation and actuating lever are perfectly adapted to each other to ensure comfortable operation of the ball valves, even if enclosed in the insulating shell.

Reliable safety

Whether made of high-quality gunmetal or long-lived stainless steel, all system ball valves have a stainless steel shut-off unit and are suitable for all drinking water and heating installations as well as for industrial and plant engineering. Equipped with the patented SC-Contur, the Viega Easytop system ball valves with direct press connection guarantee premium safety even during mounting.

Premium technology

State-of-the-art manufacturing technologies and cutting-edge machines guarantee top quality. The actual actuating torques, for example, are significantly better than those specified in DIN EN 13828. Future-safe materials with a long service life and a sealing concept adjusted to the casing and the shut-off unit provide for optimum functional safety, even under the most extreme conditions.

Fit for unlimited use

Easytop system ball valves are extremely versatile. They can be used for example as simple maintenance fittings, or to shut off individual devices, riser pipes, or entire storey connection pipes. Easytop ball valves are even suitable for industrial and plant engineering purposes, for example process plants operated with nitrogen, argon, or under vacuum. The delivery includes differently coloured plastic caps as media markings for the actuating lever to give a perfect overview over the wide range of applications. They allow you to identify hot water, cold water, or special media at a glance.



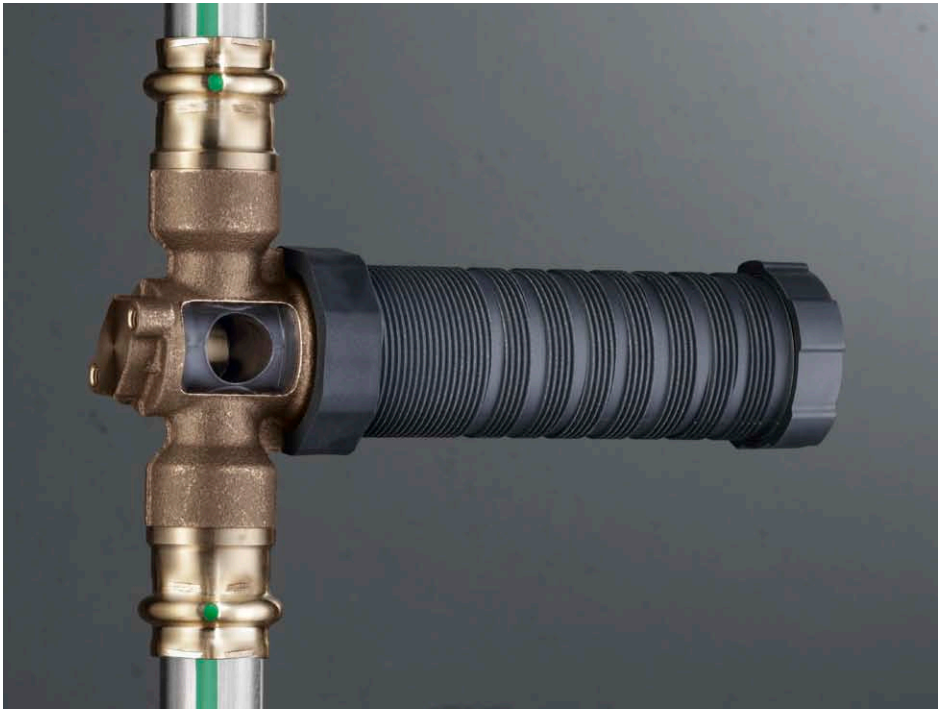
Insulating shell for the Easytop ball valve



Easytop Sanpress Inox ball valve

Viega Easytop concealed free-flow valve

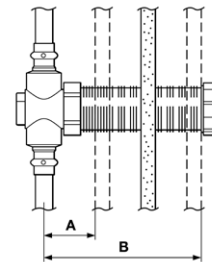
PREMIUM TECHNOLOGY FOR UPPER STOREYS, ...



Easytop concealed free-flow valve with SC-Contur
Model: 2278.5



Easytop concealed free-flow valve with Raxofix press connection and SC-Contur
Model: 5340



A: min. 43 mm
B: max. 130 mm

Utmost safety

Shutting off storey or apartment units? No problem with the Easytop concealed free-flow valve. With its premium gun-metal valve casing and a maintenance-free top without dead spaces, equipped with a shut-off unit whose water-contact surface is made of EPDM, the Easytop free-flow valve meets the specifications of the DVGW Worksheet W270, has received a KTW recommendation, and can be used with drinking water of all types. It is available in sizes DN 15 and DN 20 and can optionally be retrofitted with a self-adhesive insulating shell made of EPP insulating material.

Easy to install

The Easytop concealed free-flow valves with their respective sets are suitable for front mounting – via the wall lead-in of the protective sleeve – or for rear mounting, for which a wall bracket is screwed to the valve and attached for example to a fitting holder. They are sealed against the wall via a self-adhesive sealing flange at the wall front. Since the protective sleeve remains in the wall permanently, damage to the joints and tiles during final mounting is avoided. The protective cap guarantees that the valve is operative during the construction phase.

The Easytop free-flow valve

can be installed in conventional masonry dry and wet walls, independent of the flow direction. Furthermore, it permits a variable installation depth of 43 to 130 mm.

Maximum comfort

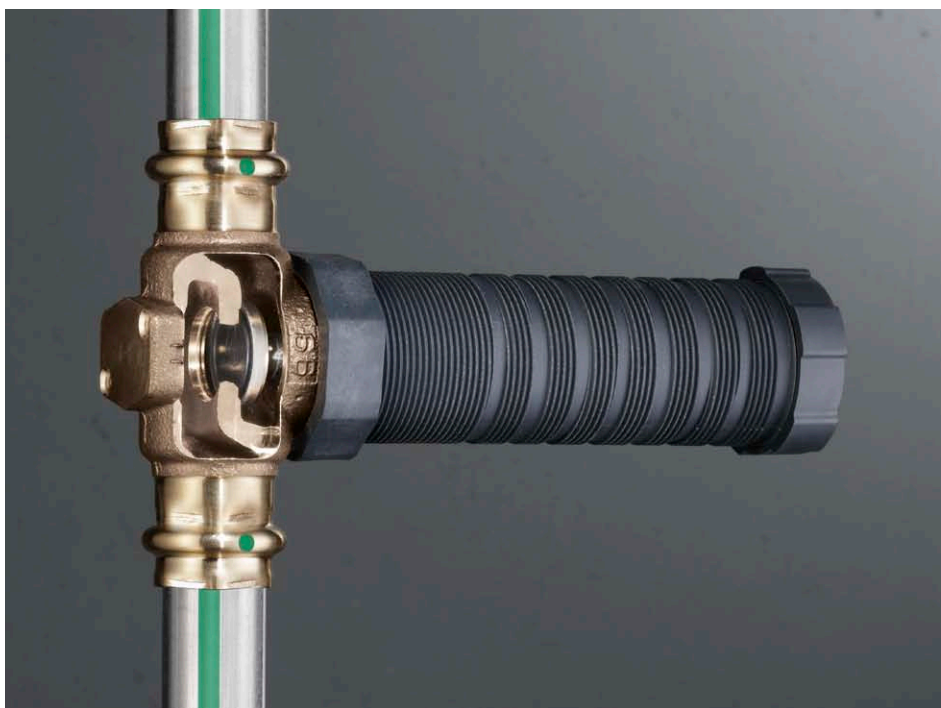
A quarter-turn is sufficient to close or open the Easytop free-flow valve completely. This provides for very short operating distances. The valve also covers the full cross section, keeping the pressure losses to a minimum. The one-piece shut-off cylinder with EPDM coating and integrally moulded spindle is identical for all valve sizes and is easy to replace if necessary.



Design of the Easytop concealed free-flow valve

Viega Easytop concealed straight seat valve

... PERFECTLY DIMENSIONED AND FULLY FLEXIBLE.



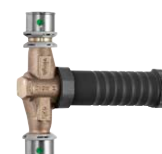
Easytop concealed straight seat valve with SC-Contur
Model: 2235.2



Easytop concealed straight seat valve with SC-Contur and Raxofix press connection
Model: 5335.2



Easytop concealed straight seat valve with Rp thread
Model: 2235.3



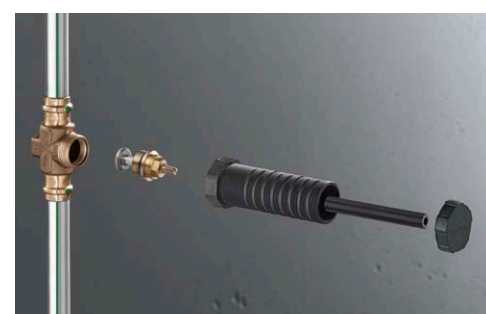
Easytop concealed straight seat valve with SC-Contur and Sanfix P press connection
Model: 2134.2

Many benefits

The Easytop concealed straight seat valve combines the high quality of the free-flow valves and the Easytop valve tops in one component. With its base unit made of gunmetal and the maintenance-free top without dead spaces, it can be used in all types of drinking water. Valve seat and valve plate unit are made of premium stainless steel; the rising spindle can be actuated from the front; and all non-metal water-contact parts comply with the KTW recommendation.

Versatile use

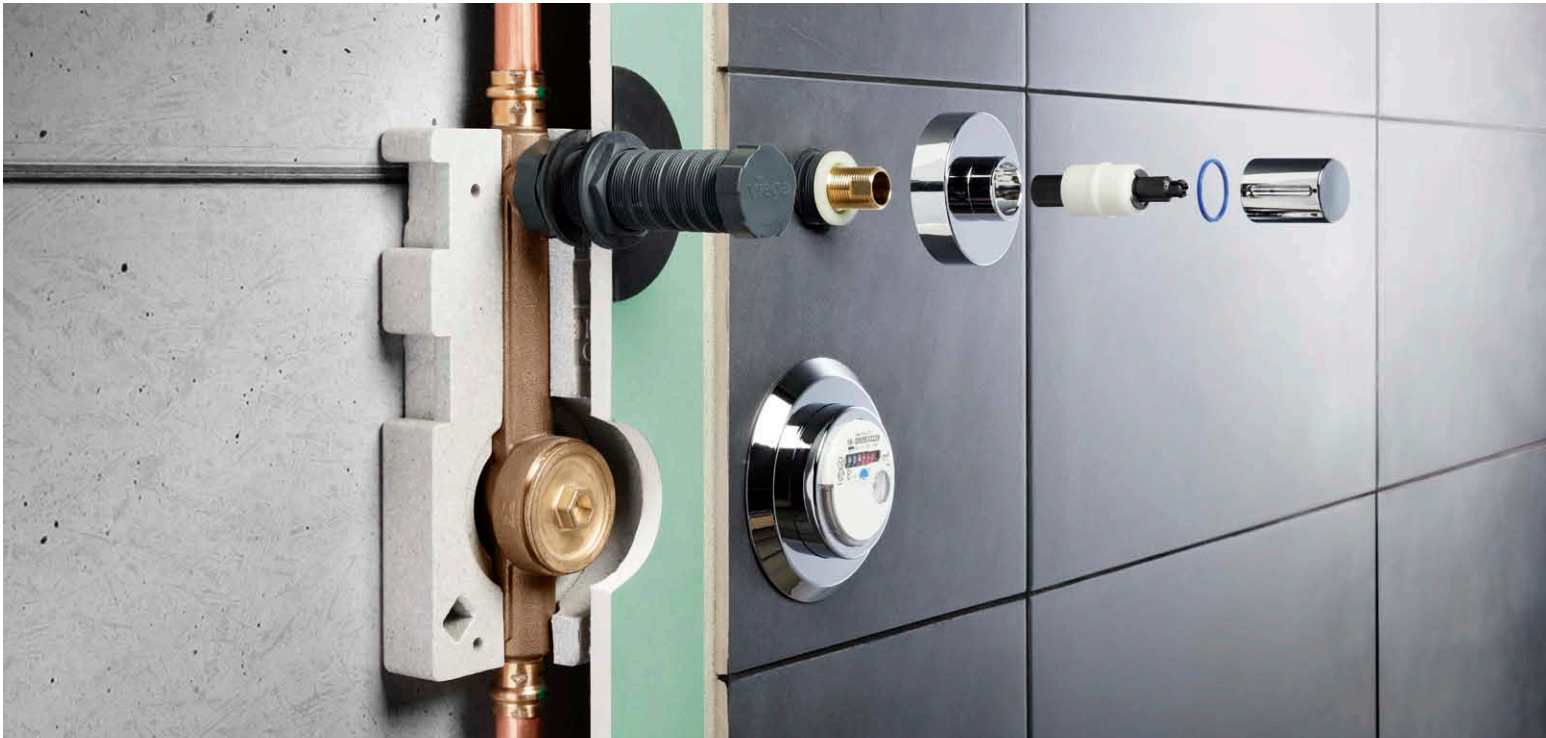
The straight seat valve is fit for a wide range of applications thanks to the nominal widths ranging from DN 15 to DN 25, the Sanpress connections for metal systems, Sanfix P and Raxofix connections for plastic piping systems, and the threaded connection. Just be sure to observe the flow direction during the assembly.



Design of the Easytop straight seat valve

Viega Easytop domestic water meter unit

THE UNIT WITH ENDLESS BENEFITS.



Design and installation

The Easytop domestic water meter units comprise the concealed straight seat valve as well as an integrated holder for Koax measuring capsules. Use for example the fixing set for mounting the straight seat valve from the front for fast and easy installation. Just be sure to pay attention to the flow direction. After

completion of all masonry, painting, and tiling work, the respective equipment set and the water meter can be mounted. A blind flange ensures full functionality of the piping system before completion of the final assembly.

Design and field of use

The Easytop domestic water meter unit is available as single unit with or without insulating box, or as double unit for hot and cold water. It is designed for a maximum temperature of 90 °C and an operating pressure of 10 bar. Choose between a 22 mm Sanpress connection or an Rp $\frac{3}{4}$ internal thread.



Easytop equipment set
Visign for More 104
Model: 2236.10



Easytop cover for public buildings model
Model: 2236.50



Selection and options

Thanks to the extensive Viega accessories, the Easytop water meter units are fit for all kinds of applications. The portfolio ranges from blind caps for use

in public buildings over timeless standard equipment sets up to high-end design solutions. The award-winning equipment sets from the Visign line complement the excellent technology of the free flow

and straight seat valves with their elegant design. The media marking is flexible: The red and blue marks are easy to exchange.



Easytop concealed domestic water meter unit without noise and heat insulation, with SC-Contur
Model: 2231.3

Easytop concealed domestic water meter unit without noise and heat insulation, with Rp-thread
Model: 2231.4

Easytop concealed domestic water meter unit with noise and heat insulation, with SC-Contur
Model: 2231.03



Easytop concealed domestic water meter unit with noise and heat insulation, with Rp-thread
Model: 2231.13



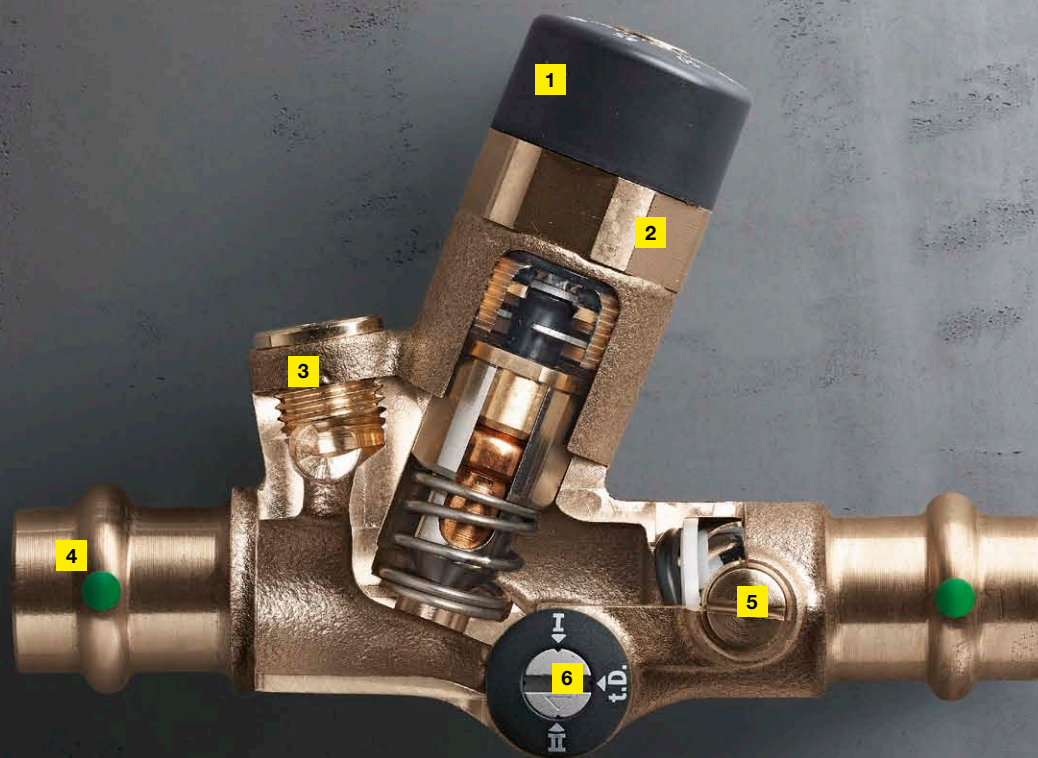
Easytop concealed domestic water meter unit with noise and heat insulation, with SC-Contur
Model: 2231.04



Easytop concealed domestic water meter unit with noise and heat insulation, with Rp-thread
Model: 2231.14

Viega Easytop system circulation regulation valve

ONE VALVE WITH TWO FUNCTIONS.



1 Setting range: 40 °C up to 65 °C

2 Control unit

3 Holder for:

- Drainage valve
- Thermometer
- Temperature sensor

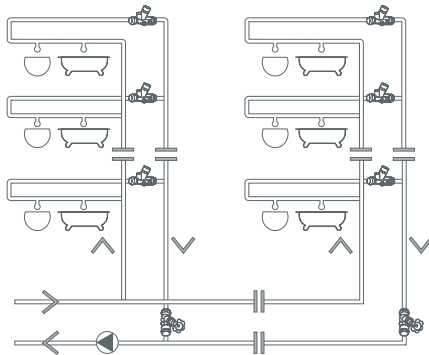
4 Dimensions/connections:

- Press connections 15 to 22 mm
- Screw fitting G ¾ and G 1

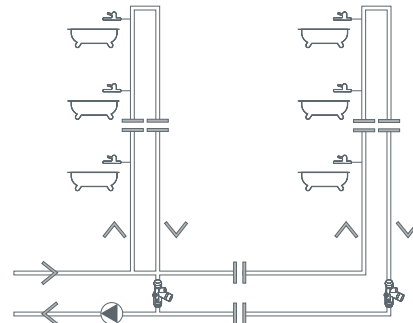
5 Shut-off: Ball valve

6 Adjustment:

- I: Storey regulation minimum volume flow 0.042 m³/h
- II: Circulation regulation minimum volume flow 0.060 m³/h
- t.D.: thermal disinfection 0.720 m³/h



Circulation regulation valve on the storey



CRV - in the riser pipe



Actuator set for controlling the circulation regulation valve
Model: 1013.9



Thermometer
Model: 1026.6

In hot water circulation pipes, the Easytop circulation regulation valve S/E helps to provide constant water temperatures at every extraction point. It opens and closes automatically to regulate the flow volume depending on the water temperature in the circulation pipe. Made of gunmetal, the circulation regulation valve can be used with all types of drinking water. In all Viega installation systems, it is integrated in the installation easily and quickly using press connections for 15, 18, or 22 mm, or screw fittings in G 3/4 and G 1 with plastic piping systems.

Fit for all types of applications

Installation is possible in both the riser pipe and on the storey. Installation on the storey is made in connection with a static circulation regulation valve in the riser pipe. Via the operating mode selection, the installation situation in riser pipe or on the storey can be defined, and manual thermal disinfection can be set. At the control unit, the temperature can be infinitely adjusted from 40 °C to 65 °C in a simple process.



Matching insulating shell for the circulation regulation valve
Model: 2210.35



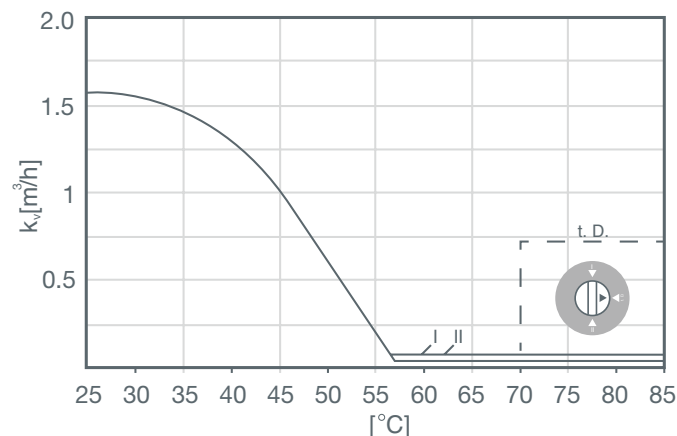
Combination of thermometer and drainage valve
Models: 2234.6/1026.6



Static circulation regulation valve
Model: 2282

Flexible properties

The control unit of the circulation regulation valve is equipped with a flexible-material element which reacts to temperature changes of the hot water in the circulation circle. If the set value differs from the actual temperature, the flowthrough volume is changed by means of the valve lift to regulate the water temperature.



Since the working point of the valve does not correspond to the k_{vmin} but lies on the operating curve, the valve can open and close independently. This results in more accurate control characteristics.

Viega Easytop accessories

PERFECTLY EQUIPPED TO MASTER ALL TASKS.



- 1** Extraction fitting for any kind of sampling
- 2** Two-piece design – extraction valve permanently installed
- 3** Actuation unit can be mounted without tools
- 4** Base unit and outlet pipe 360° rotatable
- 5** Extraction valve and outlet pipe made of stainless steel
- 6** Sampling by manual actuator
- 7** Alternative operation via air cock wrench
- 8** Handwheel for accurate control of discharge volume
- 9** Manipulation-proof
- 10** Protection from water theft



Checking the drinking water hygiene made easy: with the Easytop extraction valve

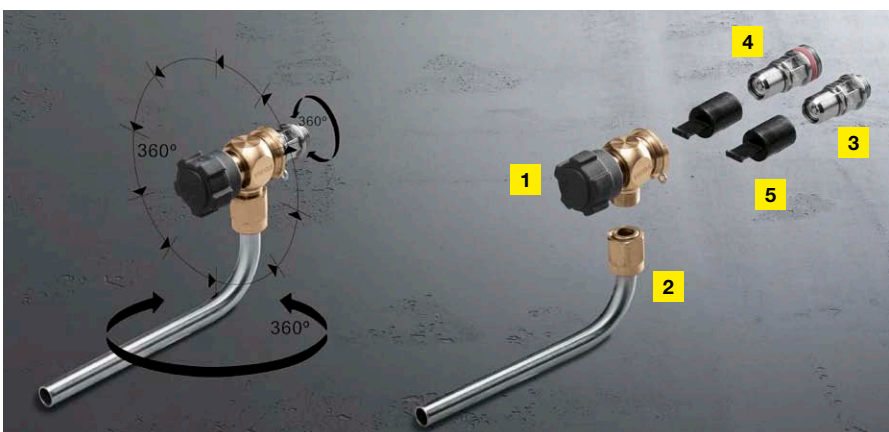
One of the strong points of the Easytop extraction valve: It allows you to take water samples under conditions comparable to those used in a laboratory. Thanks to the two-piece system consisting of a stainless steel extraction valve and the universal gunmetal actuation unit, it is particularly economical because the actuation unit can be used at a large number of extraction points. Since the actuation unit is removable, it can easily be cleaned in an autoclave and furthermore effectively protects the system from water theft and manipulation.

Valve base body and outlet pipe are 360° rotatable, and the actuation unit can also be mounted in 45° steps. This ensures optimum vertical alignment for

sampling at all times. The extraction valve can be chemically and thermally disinfected on site.

Two versions and one extension for easy draining

The three new ball valve models have G 1/4 plugs on both sides, allowing for example for mounting drainage valves. Simple drainage valves are comprised in the delivery of these ball valves. If the Easytop slanted seat valves and the Easytop ball valves are additionally equipped with insulating shells, the drainage valves can be extended by using gunmetal or stainless steel extensions. This ensures that the Easytop system fittings can be operated in any installation situation.



- 1** Actuation unit
- 2** Outlet pipe
- 3** Extraction valve 1/4 inch
- 4** Extraction valve 3/8 inch
- 5** Protective cap

Viega Easytop

THE PRODUCT RANGE.

The Viega Easytop product range convinces not only with its premium slanted seat valves and ball valves but also with the wide choice of accessories for clean and safe installation. Special components such as the mounting unit, the apartment water meter unit, or the circulation regulation valve round the product range off, offering one-stop premium quality for all types of applications. See below for an excerpt from the Easytop delivery program. For more details, refer to the product catalogue.





● 2275.6



● 2275.1



● 2275.7



● 2370



● 2275.94



● 2275.90



● 2223.3



● 2223.2



● 2281.5



● 2281.15



● 2210.30



● 2235.2



● 5335.2



● 2134.2



● 2235.3



● 2210.40



● 2231.3



● 2231.03



● 2231.04



● 2231.4



● 2231.13



● 2231.14



● 2236.10



● 2236



● 2236.50



● 2230.12



● 2230.11



● 2230.10



● 2230.70



● 2230.92



● 2230.52



● 2230.53

INT 778 002-3/18-117650 · We reserve the right to effect changes.



Viega Holding GmbH & Co. KG

Viega Platz 1
57439 Attendorn
Germany

Phone +49 (0) 2722 61-0

viega.com

